

"



"

Revision History

Table of Contents

- 3.1
 - 3.2
 - 3.3
 - 3.4
 - 3.5
 - 3.6
-

	1 6	6

	1 6	6

-

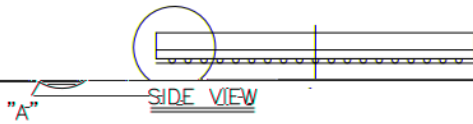
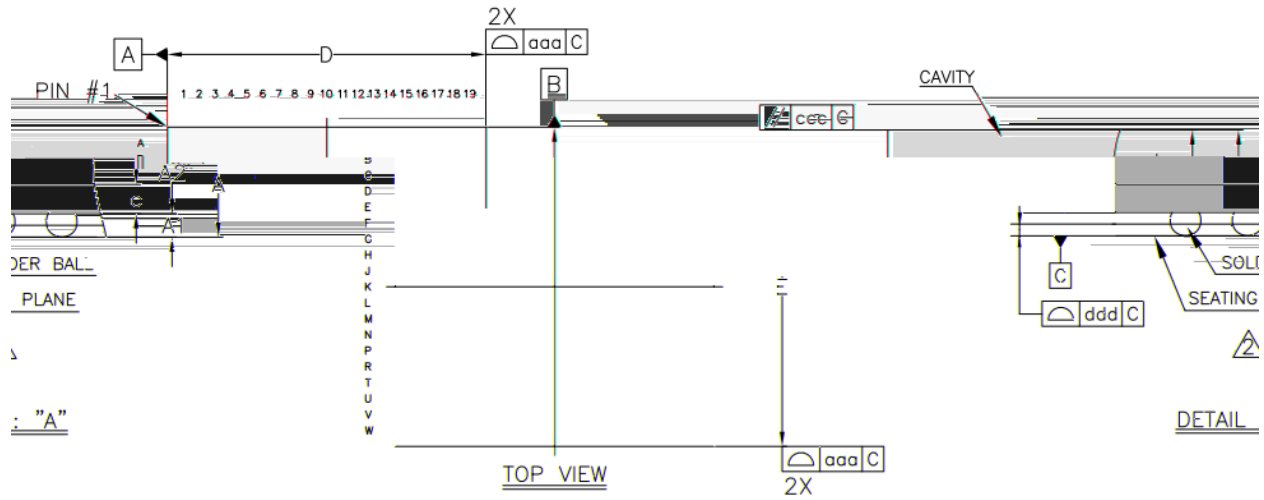
	1 6	6
--	-----	---

	1 6	6

	1 6	6
--	-----	---

!

	1 6	6
--	-----	---





!



! -

"





--	--	--

电气规格

3.1

Tj (PN)	-65		140	° C
	-55		125	° C

3.4

3.4.1 NCSI AC Specification

Tckf	NCSI_REF_CLK Frequency		50		MHz
Rdc	NCSI_REF_CLK duty cycle	35		65	%
Racc	NCSI_REF_CLK accuracy			100	ppm
Tco	Clock-to-out (10 pF =< cload <=50 pF) NCSI_RXD[1:0], NCSI_CSR_DV Data valid from NCSI_REF_CLK rising edge	2.5		12.5	ns
Tsu	NCSI_TXD[1:0], NCSI_TX_EN Data Setup to NCSI_CLK_IN rising edge	3			ns
Thold	NCSI_TXD[1:0], NCSI_TX_EN Data hold from NCSI_REF_CLK rising edge	1			ns
Tor	NCSI_RXD[1:0], NCSI_CSR_DV Output Time rise	0.5		6	ns
Tof	NCSI_RXD[1:0], NCSI_CSR_DV Output Time fall	0.5		6	ns
Tckr/Tckf	NCSI_REF_CLK Rise/Fall Time	0.5		3.5	ns

3.5

3.5.1 Specification for External Crystal

Frequency	-	-	25	-	MHz
Vibration mode			Fundamental		
Frequency Stability	Ta=0-70	-30		+30	ppm

Frequency Tol erance	Ta=25	-50		+50	ppm
Load Capaci tance			20		pf

3.5.2 External Clock Oscillator Specification

--	--	--	--	--

3.6

WX1860

4

推荐型号

wi nbond	W25Q80DV
mi crochi p	SST25VF080B
	GD25Q80

! 订购信息

1	WX1860A2		0 -70 , 40nm, 2	2
2	WX1860A4		0 -70 , 40nm, 4	4